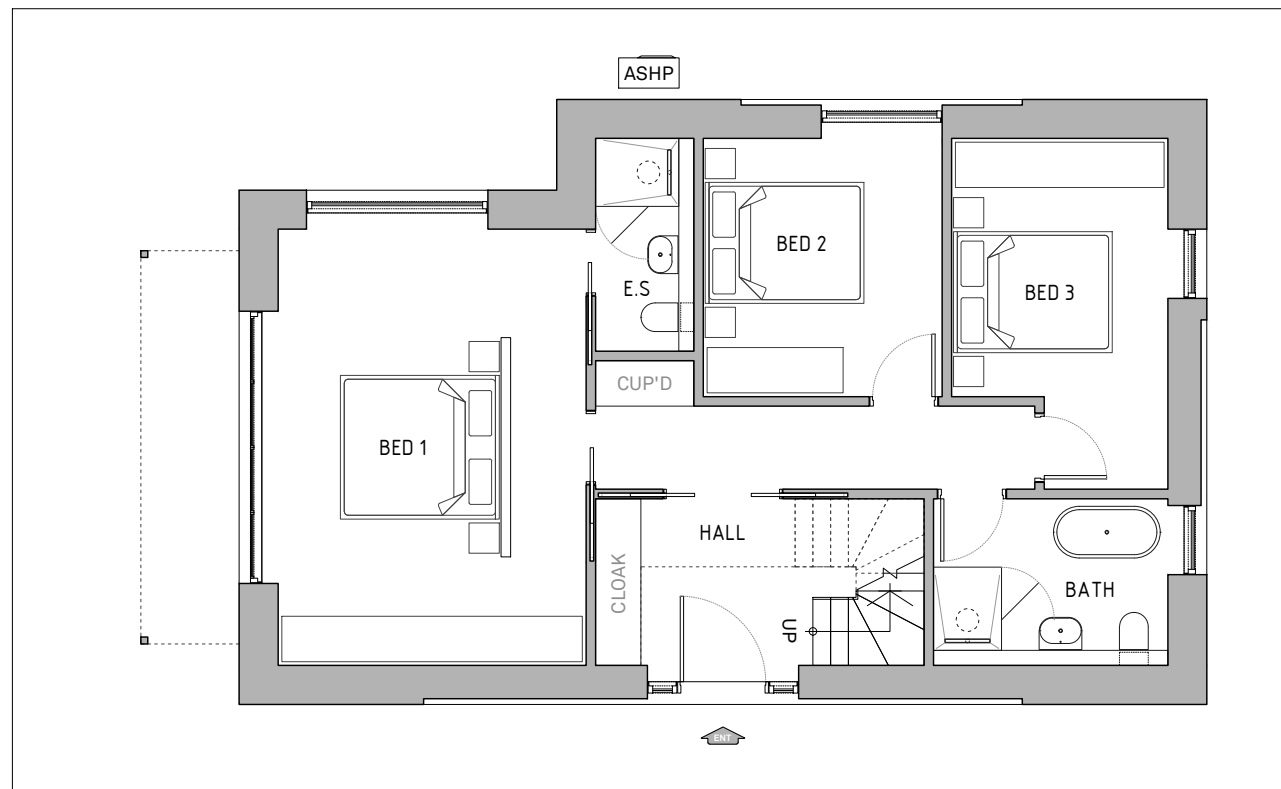
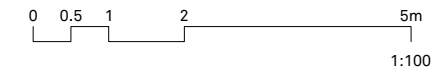


**GROUND FLOOR**

- Entrance Hall
- Stair
- Bedroom 1 ( master)
- Bedroom 1 En-suite
- Bedroom 2
- Bedroom 3
- Family Bathroom



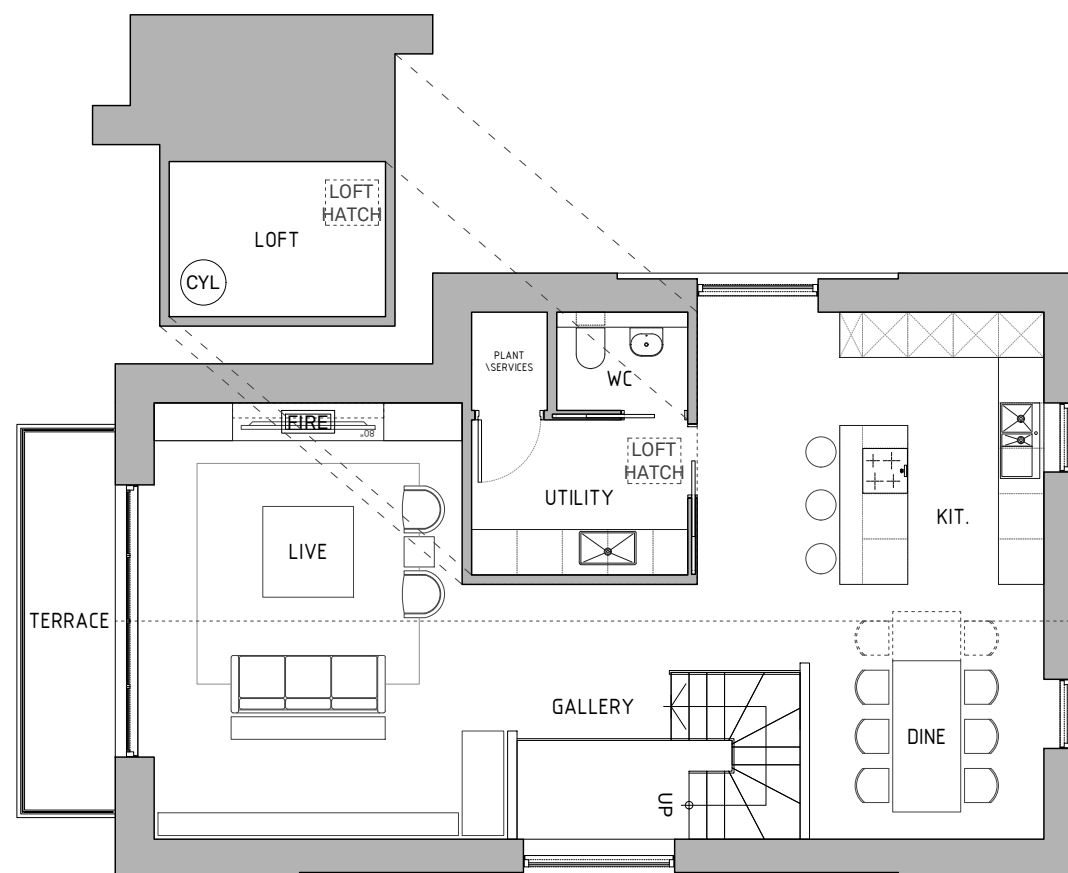
**GA  
GROUND FLOOR**

**FIRST FLOOR**

- Landing Gallery
- Living Room
- Terrace
- Kitchen
- Dining
- Utility
- WC
- Plant/Services Cupboard
- Loft Access Hatch

**LOFT**

- Plant/Services/Storage



**GA  
FIRST FLOOR / LOFT**

| Stg. Rev. | Drw. Rev. | Description | Date |
|-----------|-----------|-------------|------|
|-----------|-----------|-------------|------|

Revisions:

Project:

**COOKSWOOD  
STOKE ST. MICHAEL**

Client:

Drawing:

**PLAN  
The Cottage  
Upsidedown Living**

| Scale @ A3: | Drawing No.       | Stage     |
|-------------|-------------------|-----------|
| 1:100       |                   | 05        |
| Drawn:      | <b>B02.100.00</b> | Stg. Rev. |
| CAD-JP      |                   | 00        |
| Date:       |                   | Drw. Rev. |
| AUG 2021    |                   | 00        |

Any discrepancy or query concerning this drawing should be referred to the Lomax Design & Build Ltd. © Copyright : Lomax Design & Build Ltd.