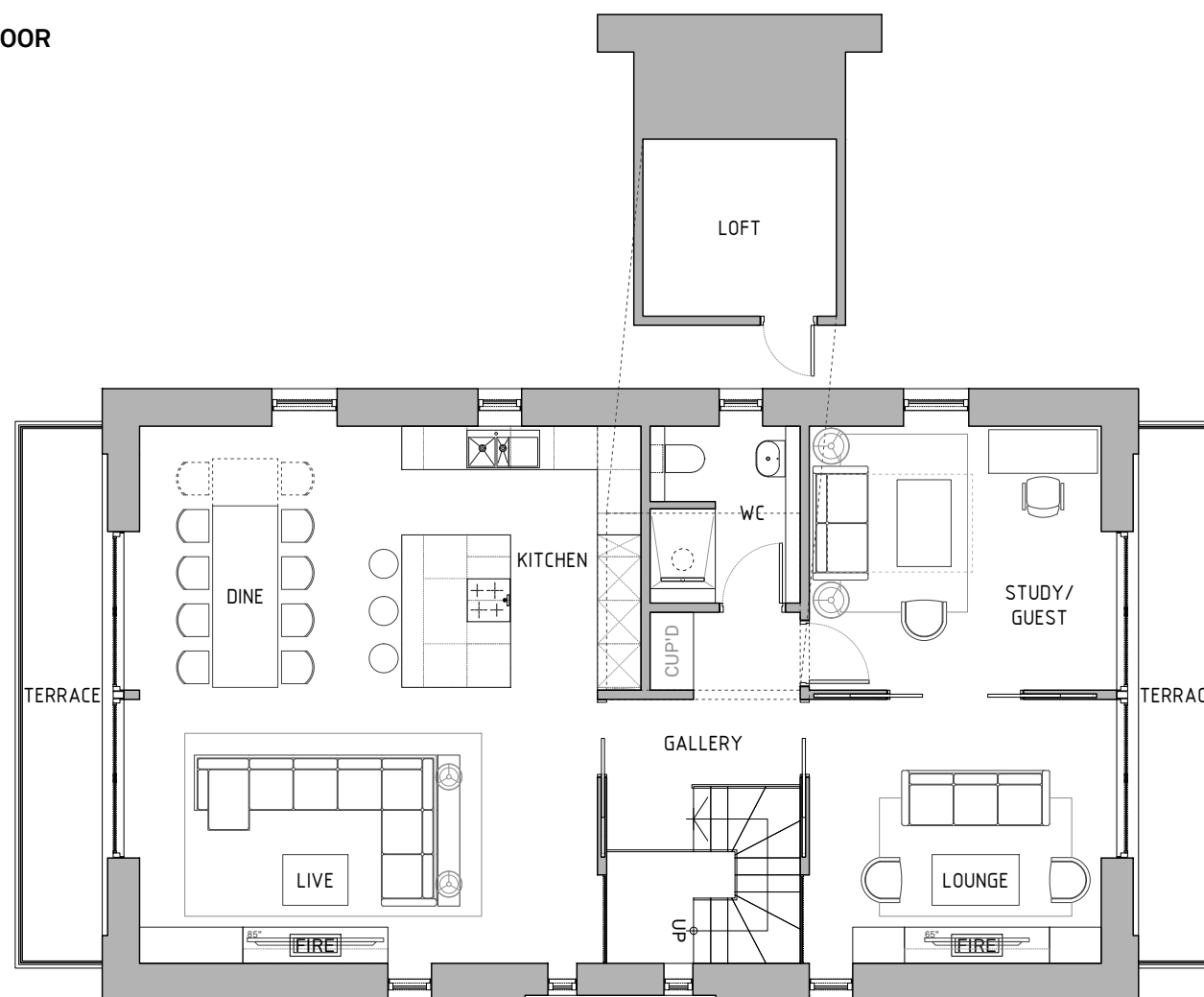


GROUND FLOOR

- Entrance Hall
- Stair
- Hallway
- Bedroom 1 (master)
- Bedroom 1 En-suite
- Bedroom 2
- Bedroom 2 En-suite
- Bedroom 3
- Family Bathroom
- Utility/Boot Room
- Plant/ Services Cupboard



**GA
GROUND FLOOR**



FIRST FLOOR

- Landing Gallery
- Wall Loft Access Hatch
- Living Room
- Terrace
- Dining
- Terrace
- Kitchen
- Lounge
- Terrace
- Study/Guest Room
- Terrace
- WC
- LOFT
- Plant/Services/Storage

**GA
FIRST FLOOR / LOFT**

| Stg. Rev. | Drw. Rev. | Description | Date |
|-----------|-----------|-------------|------|
|-----------|-----------|-------------|------|

Revisions:

Project:

**COOKSWOOD
STOKE ST. MICHAEL**

Client:

Drawing:

**PLAN
The Barn
Upsidedown Living**

| Scale @ A3: | Drawing No. | Stage |
|-------------|-------------------|-------|
| 1:100 | C02.100.00 | 05 |
| Drawn: | | 00 |
| CAD-JP | | 00 |
| Date: | | 00 |
| AUG 2021 | | |

Any discrepancy or query concerning this drawing should be referred to the Lomax Design & Build Ltd.
© Copyright : Lomax Design & Build Ltd.