

Summerhouse

Three bedroom contemporary house

The Summer House is one of our latest designs, offering 2300 sq ft of internal living space and 800 sq ft of external patios. This stylish, modern property is an ideal escape for you and your loved ones, featuring three first floor bedrooms with a master bedroom suite including walk in dresser and large en-suite bathroom. A fourth bedroom or study on the ground floor. It also offers a first floor balcony with glass balustrade, ideal for sunbathing and outdoor dining, and allowing wonderful views of the natural scenery that surrounds you.

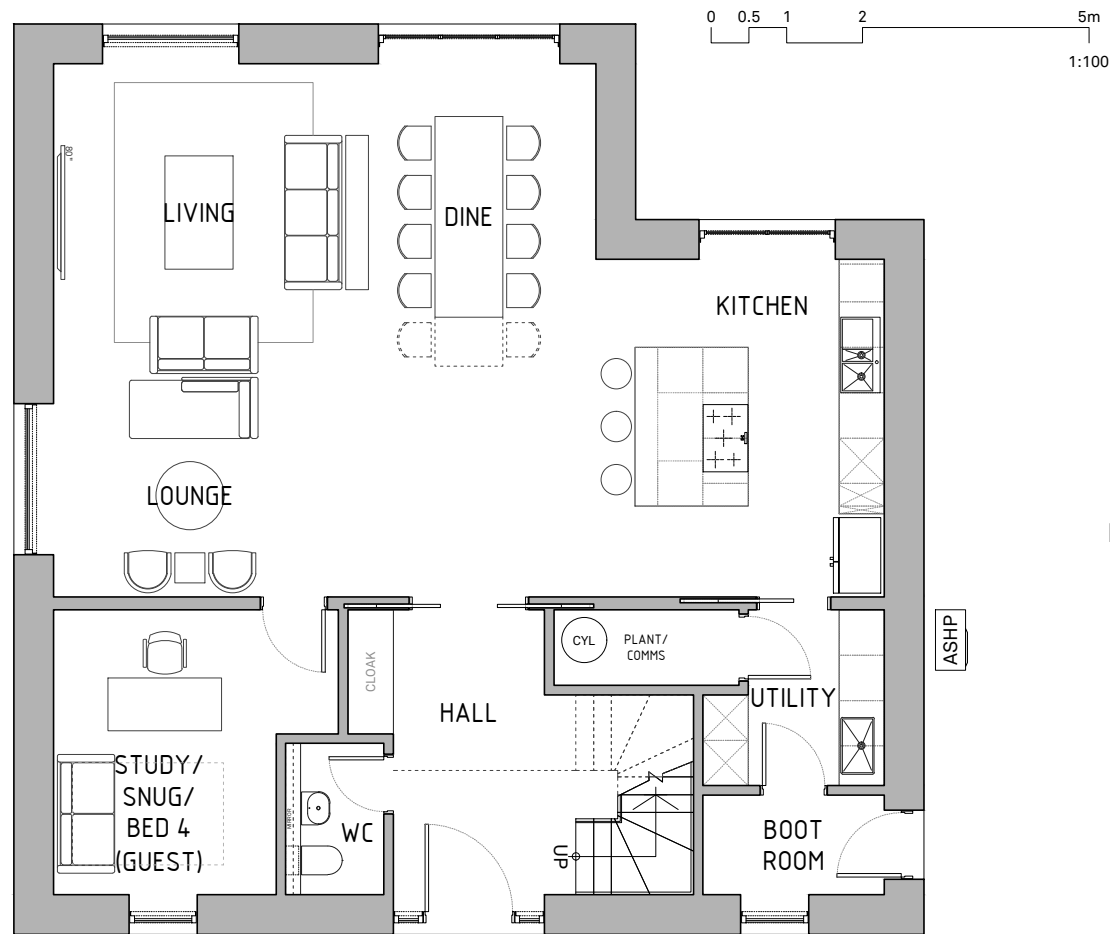
Specification

Exterior

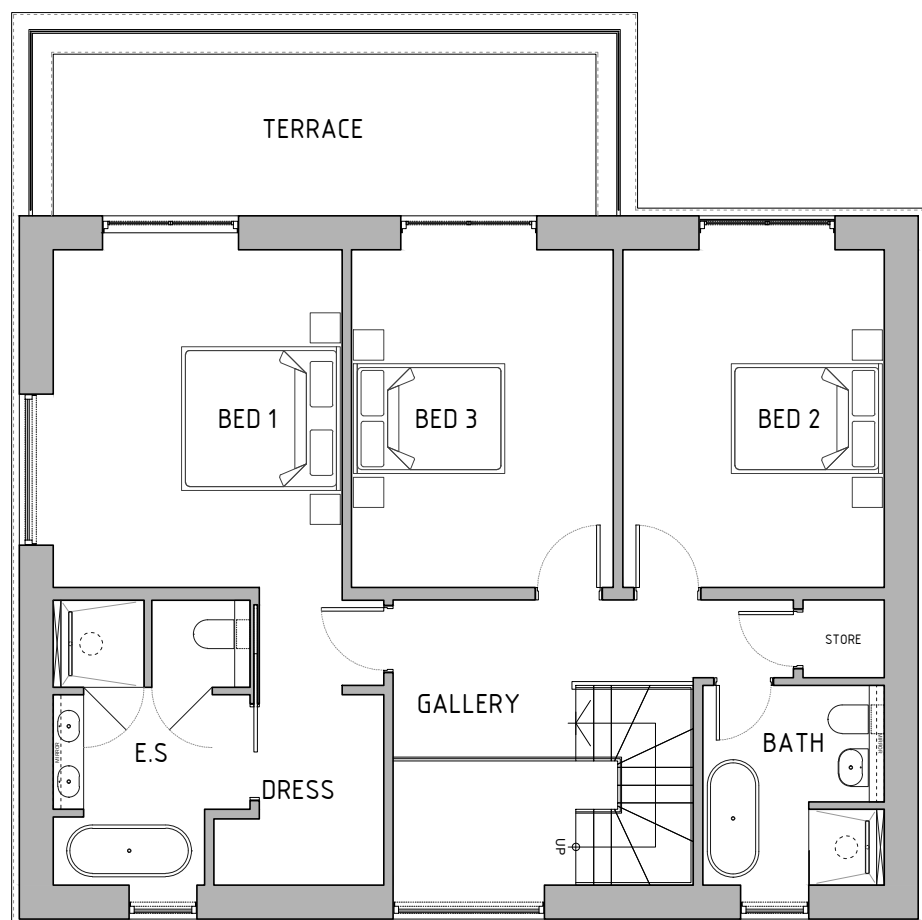
- Locally sourced natural stone exterior
- Sustainably sourced Siberian Larch cladding
- Double glazed windows set in powdered aluminium frames
- Air source heat pump
- Lindab galvanised drainage
- Paved surrounds, turf and landscaping, estate fencing and hedge boundary

Interior

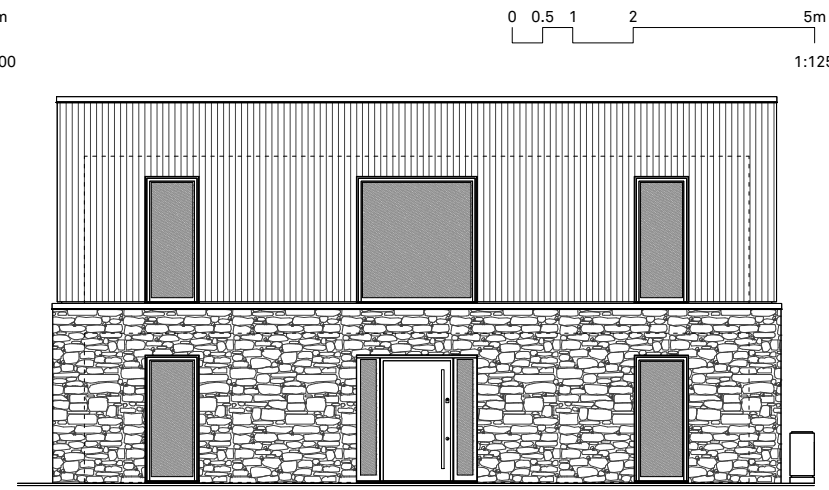
- Engineered Karndean ground floor flooring
- Brushed stainless steel electrical fittings
- Choice of door handles/fittings
- Traditional staircase
- Wooden internal doors
- Sheraton Kitchen with a choice of appliances and work surfaces
- Duravit Sanitaryware with Grohe fittings and accessories
- Choice of tiling around basins in bathrooms and ensuites



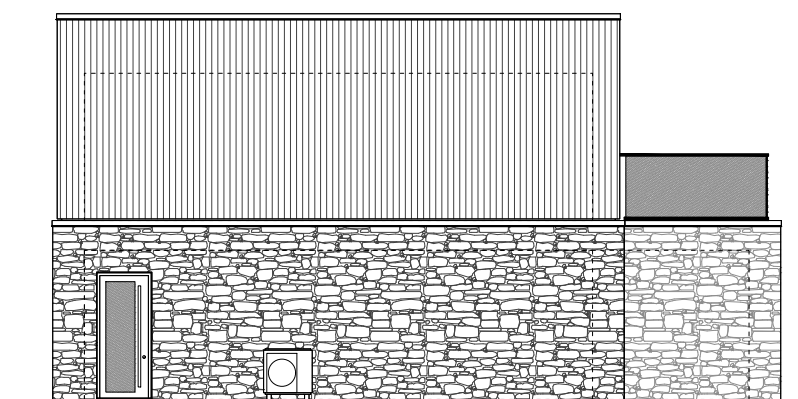
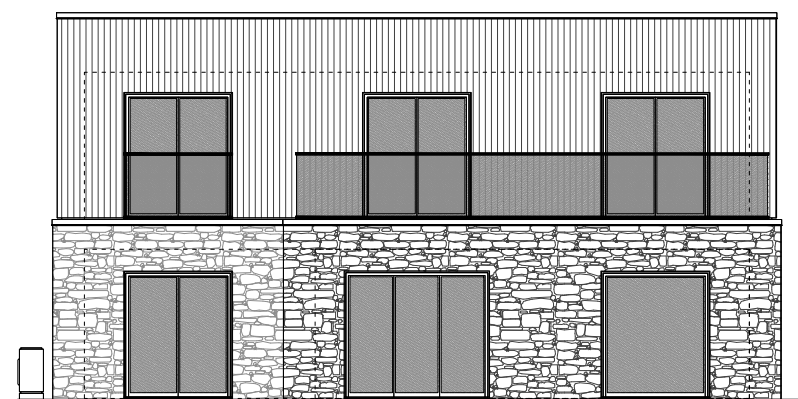
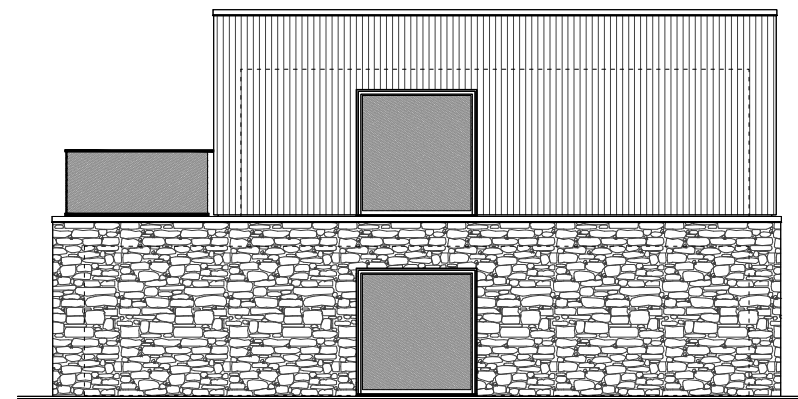
GROUND FLOOR



FIRST FLOOR



ENTRANCE



ELEVATIONS

ACCOMMODATION

GROUND FLOOR

- Entrance Hall
- Stair
- Kitchen
- Living
- Lounge
- Dining
- Boot Room
- Utility
- Plant
- Services Cupboard
- Hot Water Cylinder
- Study (Bedroom 4)
- WC

FIRST FLOOR

- Bedroom 1
- Bedroom 1 En-suite
- Walk-In Dresser
- Terrace
- Bedroom 2
- Bedroom 3
- Terrace
- Family Bathroom
- Store Cupboard